

# Commercial Building

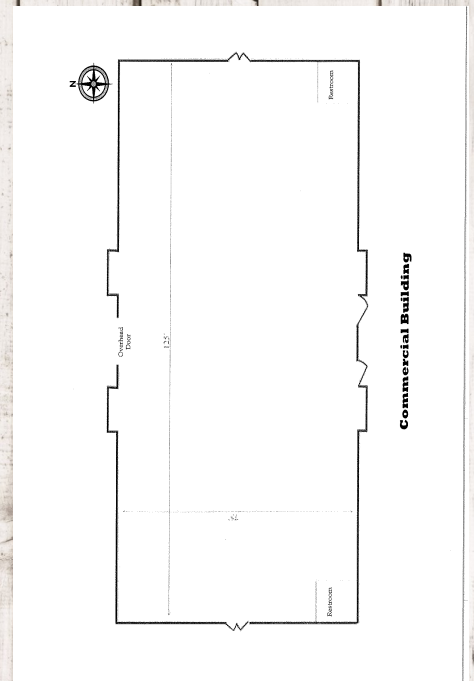
## Receptions, Quinceñera, Auctions, Shows

Built in 1903, this building has historic spacious space. It is located on a corner just west of the Grandstands. There is plenty of room to accommodate for your guests to park. It has a very open, rustic, barn type feeling. There are many different ways to decorate this building to make it your own special event.



## Building Features

Rental Fee	\$580.00 per day
Facility Description	Historic Brick exhibit hall
Electrical	110v
Square Footage	9,375
Length (ft.)	125'
Width (ft.)	75'
Restroom Availability	Yes-Seasonal
A/C Available	Yes
Heat Available	No
Availability	April—Oct weather permitting
Storage Room	Yes
Overhead Doors	1
Seating Capacity	625 Banquet
Night Lighting	Yes
Floor Type	Concrete



All prices are subject to change without notice.