
FFA Building



The FFA Building, built in 2002 and located on the southwest end of the Missouri State Fairgrounds, is a modern, versatile venue ideal for wedding receptions, dog shows, parties, anniversaries, trade shows, and banquet auctions. Smaller in size, it features an open floor plan similar to many other fairgrounds facilities, offering flexible space that can be easily tailored to fit a variety of events and gatherings.

Building Features

Facility Description: Open-span exhibit hall

Electrical: 110V

Square Footage: 6,077

Length (ft): 56'

Width (ft): 102'

Restrooms: Yes

Air Conditioning: Yes

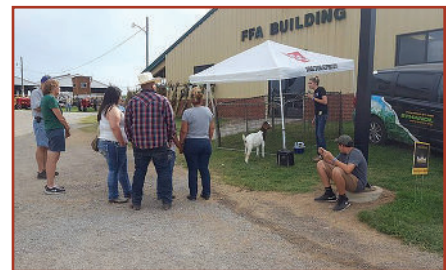
Heat: Yes

Overhead Doors: 10' X 8'

Seating Capacity: 150, banquet

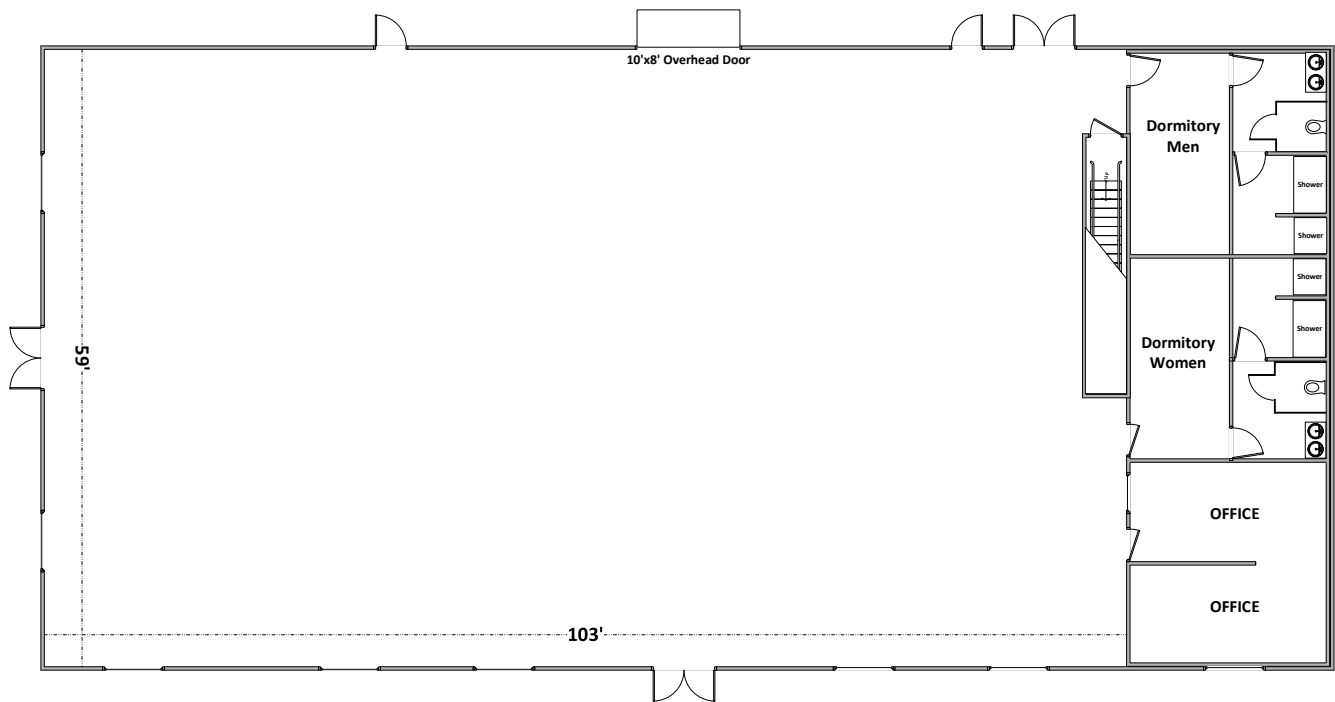
Night Lighting: Yes

Floor Type: Concrete



Prices are subject to change without notice. For accessibility details, visit <https://mostatefairgrounds.com/plan-event/accessibility/>.

FFA Building



FFA BUILDING
approx. 103'x59' floor, ceiling height approx. 10'

